

CATALOGUE



— SWEDISH DENTAL SUPPLIES AB —



ARTICULATING PAPER, BLUE/RED 80 MY

Double Check, with blue and red colour on opposite side of the paper and with finger grip.

In 3 shapes:

No. 1010 - Horseshoe, Box with 6 books of 12 sheets

No. 1011 - Straight, Box with 12 books of 12 sheets

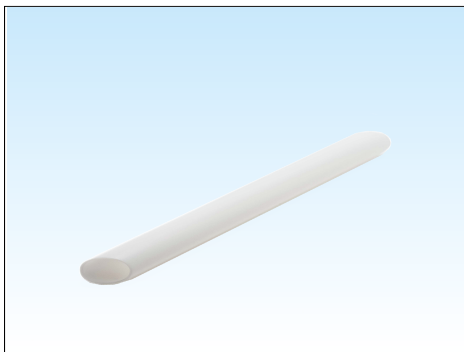
No. 1012 - Curved, Box with 12 books of 12 sheets



PLASTIC TOOTH CLEANER

- * Replace the traditional wooden tooth pick.
- * Can be bent without breaking.
- * Flexible, follows the tooth surface.
- * Lightly teased surface helps clean between the teeth.
- * Hygienical packed in dispenser of about 100 pcs.
- * 10 dispensers in each display cart.

No. 1035 - 10 boxes x 100 pcs

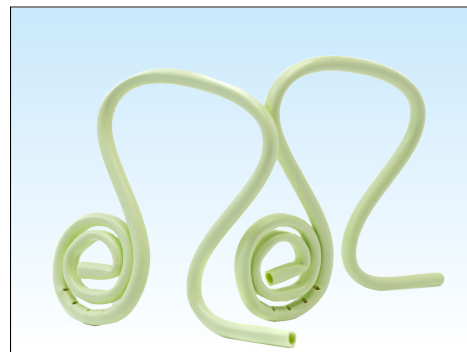


ASPIRATOR TUBES

Without angle. Length 130 mm.

Packed in carton of 10 bags x 100 pcs.

No. 1330 - Bag of 100 pcs white

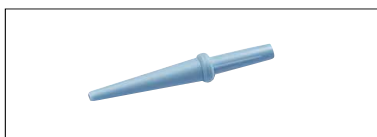


SALIVA EJECTORS BIO ORIGINAL HYGOFORMIC

With tongue guard in one sling unit. Adjustable in many ways. Each bag incl. 2 adaptors. Made of green PE, which is a fossil-free bio based material made from sugar canes.

Packed in cart. of 20 bags x 100 pcs.

No. 1315 - Bag of 100 pcs



MICROTIP

Autoclavable suction device for Hygosurge. A tiny blue autoclavable tip that turns the Hygosurge into a unique suction device for micro oral surgery and fine endodontic work.

Colour: Light-blue.

No 1338 - Bag of 25 pcs



HYGOSURGE

Surgical aspirator to fit directly to 11 mm system.

Apex: 3,6 mm. Length: 165 mm. Color: White. Autoclavable

No. 1337 - Bag of 25 pcs



DISPOSABLES



ROOT CANAL PINS

A flexible, residual plastic burn-out pin with good retention in the impression materials. Colour: Pink and green.

No. 3290 - Box of 60 pcs pink

No. 3280 - Box of 60 pcs green



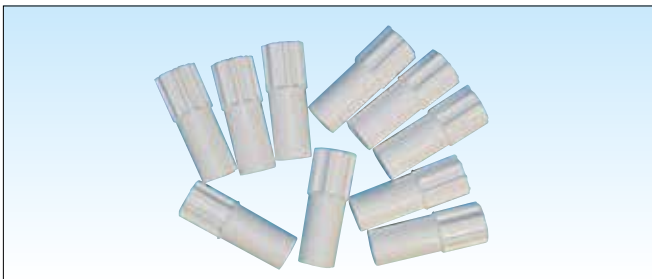
BARMAN WOODEN WEDGES

Anatomically shaped and polished for a better and safer filling procedur. Easy to insert between the teeth. Made of splinter resistant birchwood.

No. 1384 - Box of 200 pcs, small

No. 1385 - Box of 200 pcs, large

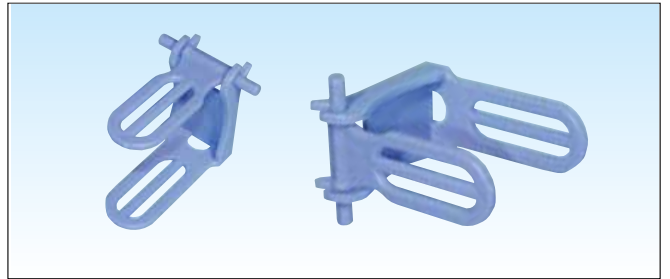
No. 1386 - Box of 200 pcs, small & large



ADAPTOR FOR SALIVA EJECTORS

For connection of saliva ejectors into ejection system. Ø 11m.

No. 1320 - Bag of 10 pcs



ARTICULATOR - OCCLUDATOR

Disposable of plastic. For inlays, crowns and small bridges. Also for fitting study models. Colour: Blue.

No. 1021 - Box of 25 pcs

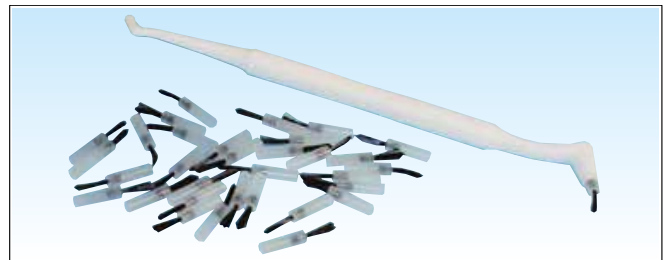


ANGLE WIDER AND LIP HOLDER

Easy to place and suitable for photography, oral surgery, orthodontic bonding and restorative work. Made of polycarbonate and sterilizable in autoclave at 134°C.

No. 4370 - Angle wider, adult. 2 pcs

No. 4371 - Lip holder, adult. 2 pcs



APPLICATOR BRUSHES

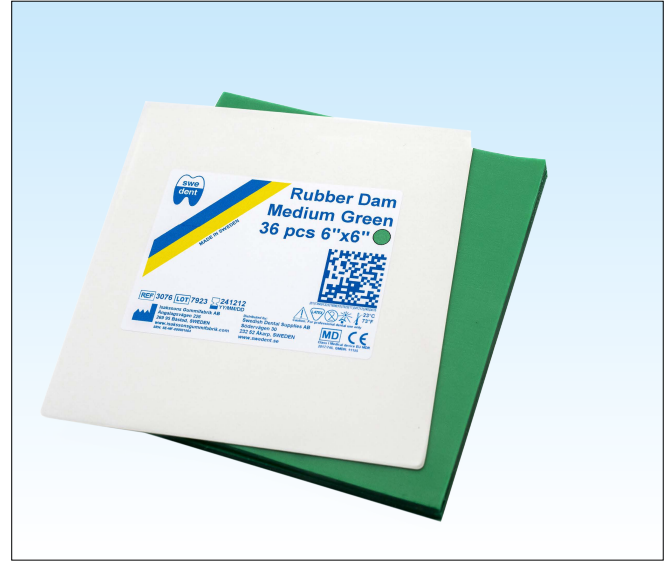
Disposable dental applicators for precision application of: Cavity lining - Etching - Sealants - Bonding - Adhesives - Varnish application - Haemostatic liquids - Disclosing agents

No. 1395 - Handle white, bag of 5 pcs

No. 1396 - Mini-brushes, bag of 100 pcs



ENDODONTICS



RUBBER DAM

In 3 colours, **dark, light and green**. Withstand for autoclaving upto 118°C (224°F).

IN ROLLS:

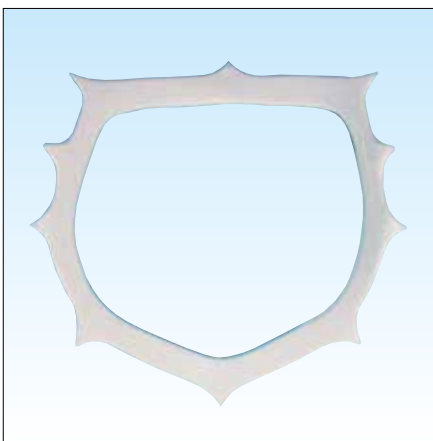
- No. 3081 - Thin light, roll of 450 x 15 cm
- No. 3060 - Thin green, roll of 450 x 15 cm
- No. 3083 - Medium light, roll of 450 x 15 cm
- No. 3061 - Medium green, roll of 450 x 15 cm

RUBBER DAM

In 3 colours, **dark, light and green**. Withstand for autoclaving upto 118°C (224°F). Vacuum packed for prolonged shelf life.

IN CUT PIECES:

- No. 3086 - Thin light, 5" x 5", 12,5 x 12,5 cm, 52 pcs
- No. 3070 - Thin green, 5" x 5", 12,5 x 12,5 cm, 52 pcs
- No. 3088 - Medium light, 5" x 5", 12,5 x 12,5 cm, 52 pcs
- No. 3071 - Medium green, 5" x 5", 12,5 x 12,5 cm, 52 pcs
- No. 3091 - Thin light, 6" x 6", 15,0 x 15,0 cm, 36 pcs
- No. 3075 - Thin green, 6" x 6", 15,0 x 15,0 cm, 36 pcs
- No. 3093 - Medium light, 6" x 6", 15,0 x 15,0 cm, 36 pcs
- No. 3076 - Medium green, 6" x 6", 15,0 x 15,0 cm, 36 pcs



RUBBER DAM FRAME N/O

Od plastic and radiolucent.
No need to remove when X-raying.
Autoclavable upto 118°C (224°F)

No. 3100



RUBBER DAM CLAMPS

Numbers:	15	24	27
	18	25	28
	22	26	29
	30	138	201
	31	139	202
	51	200	203
	204	207	212
	205	208	210
	206	209	211

No. 3110 - S.S. White pattern. Available for incisors, bicuspid and molars



RUBBER DAM CLAMPS HOLDER PALMER

No. 3112

RUBBER DAM PUNCH AINSWORTH

No. 3111



CROWNS



TEMPORARY POLYCARBONATE CROWNS

The crowns are made of non-toxic polycarbonate. This plastic is due to its molecule structure extremely unsusceptible, even to the strain of important temperature changes and other physical or chemical influences. These very flexible and thin crowns can be cut, formed, bent and pressed without breaking or ripping.

They form stable compounds with all acrylates and ZnO-tooth cements. Further these polycarbonate crowns are superior because of their good cervical fit, precise anatomy and shade stability.

No. 2190 - Anteriors and Premolars assortment box of 180 crowns, without mould guides, 3 crowns x 60 sizes

No. 2195 - Anteriors and Premolars assortment box of 180 crowns, with mould guides, 3 crowns x 60 sizes

No. 2198 - Anteriors and Premolars assortment box of 360 pcs crowns, with mould guides, 6 crowns x 60 sizes

No. 2215 - Refill box of 5 crowns of any mould

No. 2220 - Loose crowns in bulk, min. 100 pcs/each mould

MOULD GUIDES

Upper Centrals		Upper Laterals		Cuspids		Lower Anteriors		Bicuspids	
Right	Left	Right	Left	Right	Left	Long	Short	Large	Small
100	103	2	200	300	303	60	69	40	50
101	102	20	29	301	302	61	68	41	51
10	19	21	28	30	39	62	67	42	52
11	18	22	27	31	38	63	66	43	53
12	17	23	26	32	37	64	65	44	54
13	16	24	25	33	36				
14	15			34	35				



CROWN FORMS, strip crowns SYSTEM C

The strip crowns are made out of extremely thin, super elastic, form stable non-toxic material. Their excellent anatomical design and occlusion surface reduces the necessary correcting work-done with a scalpel or scissor - to a minimum. The long tooth-necks make optimal fitting possible. The clear material allow control of the hardening and the colour. They can also be used with UV-light hardening materials. The crown material does not bind with any of the used plastics, and thus the crowns are easy to remove. The crowns are available in assortment boxes of 60 respectively 120 pieces and in refill boxes. The crowns are available in all sizes of anteriors and premolars.

- No. 2140 - Anteriors and Premolars assortment box of 60 crowns, 1 crown x 60 sizes
- No. 2141 - Anteriors and Premolars assortment box of 120 crowns, 2 crowns x 60 sizes

- No. 2150 - Refill box of 3 crowns of any mould
- No. 2155 - Loose crowns in bulk, min. 100 pcs each mould

1 WIDTH: 9,75 mm A-1 L CUS. XL	2 WIDTH: 8 mm A-2 L LAT. XL	3 WIDTH: 10 mm A-3 L CEN. XL	4 WIDTH: 10 mm A-4 R CEN. XL	5 WIDTH: 8 mm A-5 R LAT. XL	6 WIDTH: 9,75 mm A-6 R CUS. XL	7 WIDTH: 5 mm F-1 L CEN. UD	8 WIDTH: 10 mm G-1 L CEN. XL	9 WIDTH: 10 mm G-2 R CEN. XL	10 WIDTH: 10 mm L-1 L CEN. XL	11 WIDTH: 10 mm L-2 R CEN. XL	12 WIDTH: 7,1 mm P-1 L-R BICUS.
13 WIDTH: 9 mm B-1 L CUS. L	14 WIDTH: 7,5 mm B-2 L LAT. L	15 WIDTH: 9,5 mm B-3 L CEN. L	16 WIDTH: 9,5 mm B-4 R CEN. L	17 WIDTH: 7,5 mm B-5 R LAT. L	18 WIDTH: 9 mm B-6 R CUS. L	19 WIDTH: 5 mm F-2 R CEN. UD	20 WIDTH: 10 mm H-1 L CEN. L	21 WIDTH: 10 mm H-2 R CEN. L	22 WIDTH: 9,5 mm M-1 L CEN. XL	23 WIDTH: 9,5 mm M-2 R CEN. XL	24 WIDTH: 7 mm P-2 L-R BICUS.
25 WIDTH: 8 mm C-1 L CUS. M	26 WIDTH: 6,75 mm C-2 L LAT. M	27 WIDTH: 8,75 mm C-3 L CEN. M	28 WIDTH: 8,75 mm C-4 R CEN. M	29 WIDTH: 6,75 mm C-5 R LAT. M	30 WIDTH: 8 mm C-6 R CUS. M	31 WIDTH: 4,5 mm F-3 L-R CEN LD	32 WIDTH: 9 mm I-1 L CEN. M	33 WIDTH: 9 mm I-2 R CEN. M	34 WIDTH: 9,5 mm N-1 L CUS. XL	35 WIDTH: 9,5 mm N-2 R CUS. XL	36 WIDTH: 6,9 mm P-3 L-R BICUS.
37 WIDTH: 7,5 mm D-1 L CUS. MS	38 WIDTH: 6,25 mm D-2 L LAT. MS	39 WIDTH: 8 mm D-3 L CEN. MS	40 WIDTH: 8 mm D-4 R CEN. MS	41 WIDTH: 6,25 mm D-5 R LAT. MS	42 WIDTH: 7,5 mm D-6 R CUS. MS	43 WIDTH: 6,75 mm F-4 L-R BICUS. M	44 WIDTH: 8,5 mm J-1 L CEN. M	45 WIDTH: 8,5 mm J-2 R CEN. M	46 WIDTH: 9 mm O-1 L CUS. XL	47 WIDTH: 9 mm O-2 R CUS. XL	48 WIDTH: 6,8 mm P-4 L-R BICUS.
49 WIDTH: 6,75 mm E-1 L CUS. S	50 WIDTH: 5,75 mm E-2 L LAT. S	51 WIDTH: 7,5 mm E-3 L CEN. S	52 WIDTH: 7,5 mm E-4 R CEN. S	53 WIDTH: 5,75 mm E-5 R LAT. S	54 WIDTH: 6,75 mm E-6 R CUS. S	55 WIDTH: 7,25 mm F-5 L-R BICUS. L	56 WIDTH: 8 mm K-1 L CEN. S	57 WIDTH: 8 mm K-2 R CEN. S	58 WIDTH: 6,3 mm P-7 L-R BICUS.	59 WIDTH: 6,5 mm P-6 L-R BICUS.	60 WIDTH: 6,7 mm P-5 L-R BICUS.



GENERAL DENTISTRY

New picture soon

New picture soon

SCREW POSTS GOLD PLATED

Conical shaped to avoid unwanted wedge effect.
Electrolytically plated with a thick layer of 24K gold. In 20 sizes and 4 lengths.

Sizes:

Short,	8,0 mm	No. 1-6
Medium,	9,5 mm	No. 1-6
Long	12,0 mm	No. 1-6
Extra Long,	14,0 mm	No. 4 and 6

- No. 4399 - Ass. box of 60 pcs (3 pcs of 20 sizes+key+wrench)
- No. 4400 - Ass. box of 120 pcs (6 pcs of 20 sizes+key+wrench)
- No. 4401 - Ass. box of 240 pcs (12 pcs of 20 sizes+key+wrench)
- No. 4402 - Refill box of 12 pcs

- No. 4420 - Cross key, separate
- No. 4421 - Hollow key, separate

SCREW POSTS PURE TITANIUM

A tissue compatible. Corrosion resistant and no chemical reactions in the human body. In 20 sizes and 4 lengths.

Sizes:

Short,	8,0 mm	No. 1-6
Medium,	9,5 mm	No. 1-6
Long,	12,0 mm	No. 1-6
Extra Long	14,0 mm	No. 4 and 6

- No. 4410 - Ass. box of 60 pcs (3 pcs of 20 sizes+key+wrench)
- No. 4411 - Ass. box of 120 pcs (6 pcs of 20 sizes+key+wrench)
- No. 4413 - Ass. box of 240 pcs (12 pcs of 20 sizes+key+wrench)

- No. 4412 - Refill box of 6 pcs



TITANIUM DENTINE RETENTION PINS

Titanium is tissue compatible and has no corrosion or galvanic reaction associated with other metals.

- * non corrosive titanium
- * smooth-cutting
- * no stress
- * maximum retention
- * soft-shearing
- * cut from solid rod
- * self-centering
- * superior stability

The retention pins are supplied in handy 12-packs with one drill, in diameters 0,75 mm (medium) and 0,60 mm (small)

- No. 4450 - Kit box of 12 pcs + 1 drill diameters 0.75 mm
- No. 4451 - Kit box of 12 pcs + 1 drill diameters 0.60 mm



GENERAL DENTISTRY



CODE RINGS ROULETT 225 rings

- 9 colours x 25 rings. For colour coding hand instruments.
- Silicon Rubber rings, fit all hand instruments.
 - Sterilizable up to 240°C / 464°F
 - In 9 different colours for easy identification.

No. 4050 - Assortment box. 225 rings



CODE RINGS

- For colour coding hand instruments.
- Silicon Rubber rings, fit all hand instruments
 - Sterilizable up to 20°C / 464°F
 - In 11 different colours for easy identification.

Box of 50 rings - one colour.

- | | | |
|-------------------|-------------------|-------------------|
| No. 4058 - Pink | No. 4062 - Brown | No. 4066 - White |
| No. 4059 - Purple | No. 4063 - Green | No. 4067 - Yellow |
| No. 4060 - Black | No. 4064 - Grey | No. 4068 - Red |
| No. 4061 - Blue | No. 4065 - Orange | |

No. 4070 - Assortment box of 80 rings = 10 rings each of 8 colours.



TAPEN TELL

A surgical and dental colour coding tape in 8 colours. Spool of 5100 x 7 mm. Autoclavable.

- | | |
|------------------|-------------------|
| No. 4350 - Black | No. 4354 - Orange |
| No. 4351 - Blue | No. 4355 - Red |
| No. 4353 - Green | No. 4356 - White |
| | No. 4357 - Yellow |



GENERAL DENTISTRY



PROTECTIVE GOGGLES, KLEERSITE

Made of Polycarbonate with side shield. Transparent colour.

Packed in white box.

No. 4271



NAPKIN HOLDER JUMBO

A coloured napkin holder with large grips which makes it easy to mount it on the napkin. Cold-sterilizable. Lightweight.

- No. 4710 - Red
- No. 4711 - White
- No. 4713 - Blue
- No. 4714 - Yellow
- No. 4715 - Green

NAPKIN HOLDER

- No. 4700 - with white plastic string



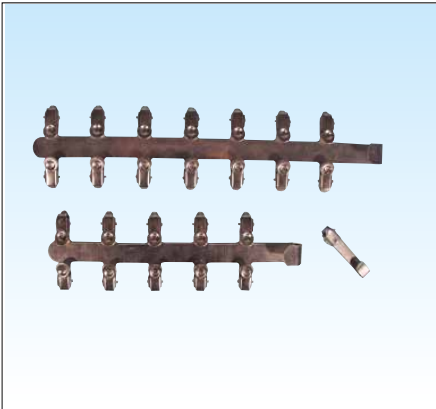
DAPPEN DISHES

In 5 colours. Packed in box of 36 pcs, one colour.

- No. 4243 - Glass clear
- No. 4245 - Glass pink
- No. 4246 - Glass yellow
- No. 4247 - Glass green
- No. 4241 - Glass dark-blue



GENERAL DENTISTRY



FILM HANGER

No. 4559 - For 1 film
No. 4560 - For 10 films
No. 4561 - For 14 films



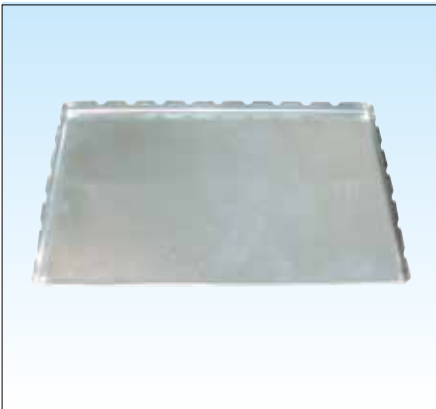
MATRIX RETAINER

No. 4285 - Toffelmire model. Universal



IWANSON MEASURING DEVICE type

Made of stainless steel. Very useful for checking the wall thickness of gold and porcelain crowns. Doublesided with an accuracy of 1/10 of a mm.
No. 4447



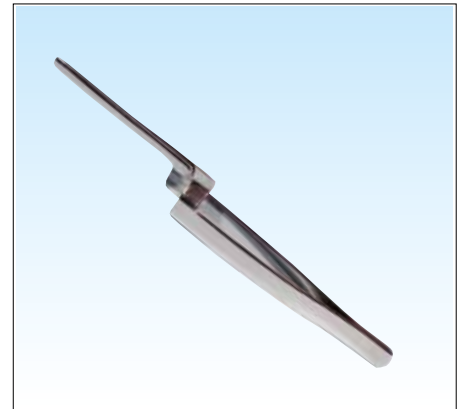
STAINLESS INSTRUMENT TRAY

No. 5672 - 284 x 183 mm



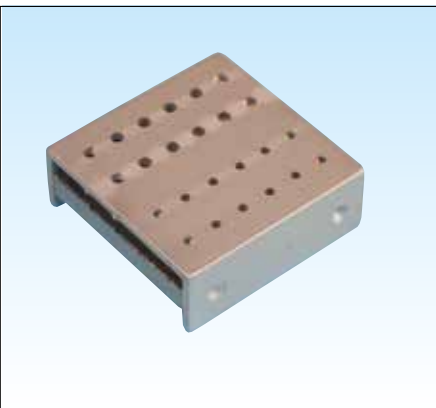
COTTON PELLET DISPENSER

No. 4720 - Chromium plated brass
No. 4730 - Plastic dome, separate



ARTICULATING PAPER FORCEPS

No. 4750 - Stainless steel



BUR STAND

40 x 40 x 12 mm
No. 5445 - For 12 FG + 12 Latch burs



PELLET CONTAINER

50 x 27 x 10 mm
No. 5710 - Stainless steel

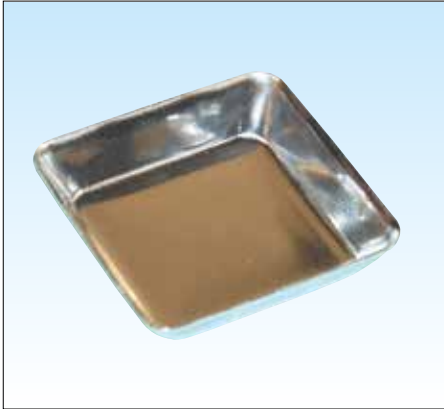


BUR STAND ROTO OF PLASTIC

No. 5525 - For 18 FG and 54 Latch burs with dom.



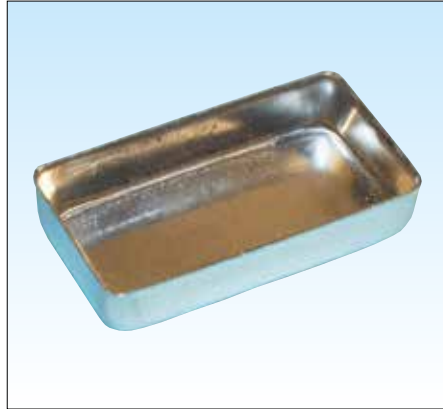
GENERAL DENTISTRY



BUR BOX

40 x 40 mm

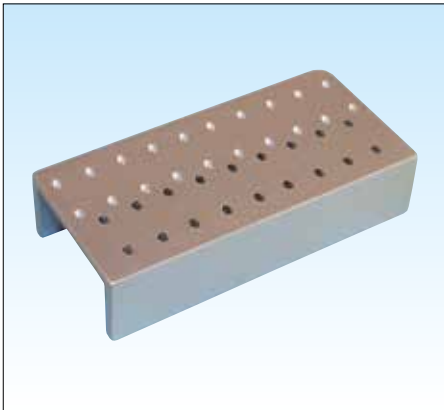
No. 5511 - Stainless steel



BUR BOX

50 x 27 x 10 mm

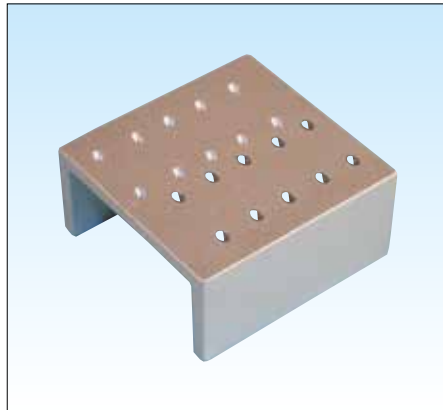
No. 5510 - Stainless steel (standard)



ENDO INSTRUMENT STAND

100 x 50 x 25 mm

No. 5444 - For 38 files



ENDO INSTRUMENT STAND, MINI

50 x 50 x 25 mm

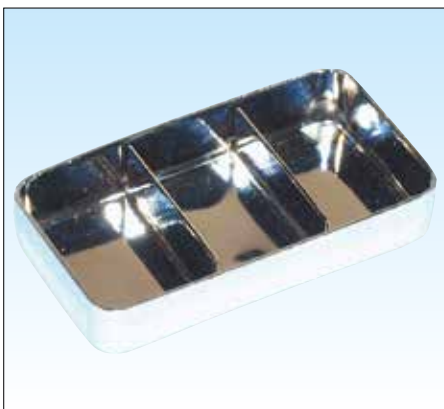
No. 5443 - For 20 files



BUR BOX

40 x 75 mm

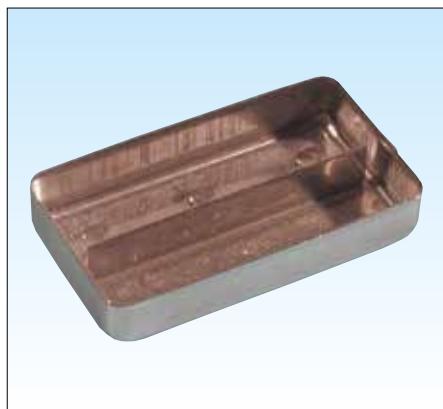
No. 5512 - Stainless steel



BOX

With 3 partitions. 50 x 27 x 10 mm

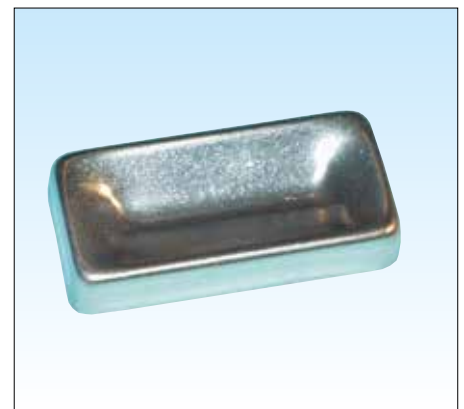
No. 5501 - Stainless steel



BOX FOR POINTS

With 2 partitions. 50 x 27 x 10 mm.

No. 5500 - Stainless steel



MEDICAMENT CUP

50 x 24 x 10 mm.

No. 5690 - Stainless steel

SWEDISH DENTAL SUPPLIES AB IS SERVING DENTAL DISTRIBUTORS WORLD WIDE WITH HIGH QUALITY DENTAL PRODUCTS SINCE 1966



— SWEDISH DENTAL SUPPLIES AB —

Postal address

Södervägen 30
SE-232 52 Åkarp, Sweden

Phone

+46 40 46 02 01

E-mail

info@swedent.se

Website

www.swedent.se